

- ① STEVENSON OAKS - INDEPENDENT LIVING ASSISTED LIVING/MEMORY OPEN 172 UNITS
- ② TAVOLO CROSSING 387 MULTI-FAMILY UNITS COMPLETED
- ③ SINGLE FAMILY (DAVID WEEKLY, HIGHLAND HOMES, SHADDOCK HOMES). TOTAL LOTS:405
- ④ GREAT HEARTS OF AMERICA CHARTER SCHOOL PRE-K, 12.6 AC OPEN 684 STUDENTS
- ⑤ LADERA - AGE TARGETED SINGLE FAMILY FOR SALE HOME COMMUNITY 185 HOMES
- ⑥ FAMILY DEVELOPMENT 15 AC SINGLE FAMILY FOR RENT CONTRACT PENDING
- ⑦ ODEN HUGHES 280 MF UNITS
- ⑧ PARCHAUS AT TAVOLO 224 BTR UNITS
- ⑨ ARCHO 486 MF UNITS

Est. Delivery Date: Q4 2026

SHOPS AT TAVOLO PARK

For lease:
 SWC Altamesa Blvd &
 Chisholm Trail Pkwy
 Fort Worth, TX 76123

Metrics

SWC Altamesa Blvd & Chisholm Trail Pkwy
Fort Worth, TX 76123

Location

SWC Altamesa Blvd & Chisholm Trail Pkwy
Fort Worth, TX 76123

Available Space

Retail Building
6,157 SF

Traffic Counts

Altamesa Blvd
15,858 VPD

Chisholm Trail Pkwy
33,963 VPD



Area Attractions



Property Highlights

SWC Altamesa Blvd & Chisholm Trail Pkwy
Fort Worth, TX 76123

1. BJ's under construction - opening Q2 2026
2. Underserved retail market
3. One of the highest residential growth markets in DFW
4. The site is located on the 27 mile Chisholm Trail Pkwy that serves as a critical connection from downtown Fort Worth to south Cleburne
5. Easy access from recently completed Chisholm Trail Pkwy
6. Large wholesaler under contract adjacent to the site



2025 Demographic Summary

	1 MILE	3 MILES	5 MILES
EST. POPULATION	12,894	91,563	217,041
EST. DAYTIME POPULATION	3,716	24,798	59,915
EST. AVG. HH INCOME	\$120,339	\$126,064	\$125,844

Site Plan

SWC Altamesa Blvd & Chisholm Trail Pkwy
Fort Worth, TX 76123



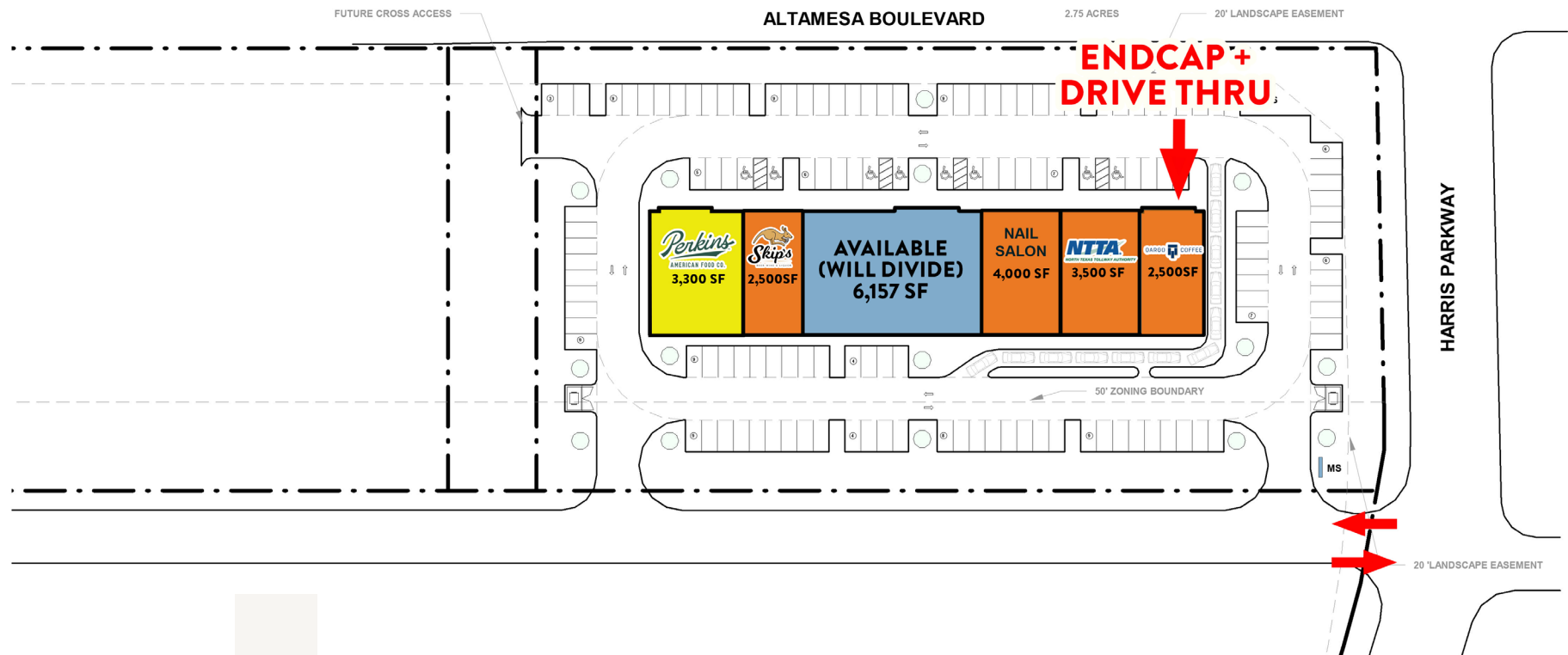
LINE AND SYMBOL LEGEND

---	EASEMENT
- · - · -	PROPERTY LINE
[Blue Box]	BUILDING
[Green Box]	GREEN SPACE



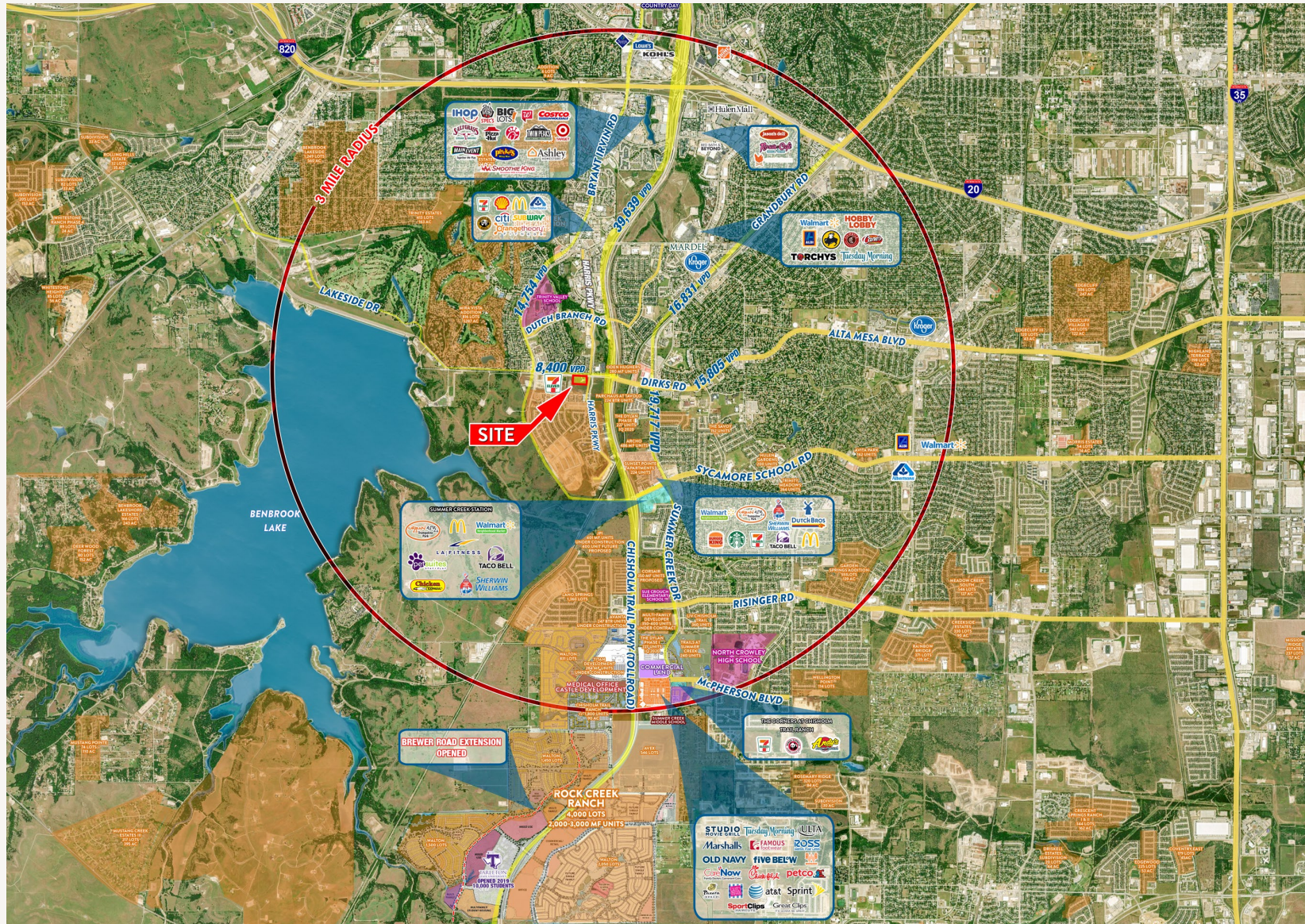
KEY

[Blue Box]	AVAILABLE
[Yellow Box]	AT LEASE
[Orange Box]	LEASE EXECUTED
[Red Box]	AT LOI



Aerial

SWC Altamesa Blvd & Chisholm Trail Pkwy
Fort Worth, TX 76123



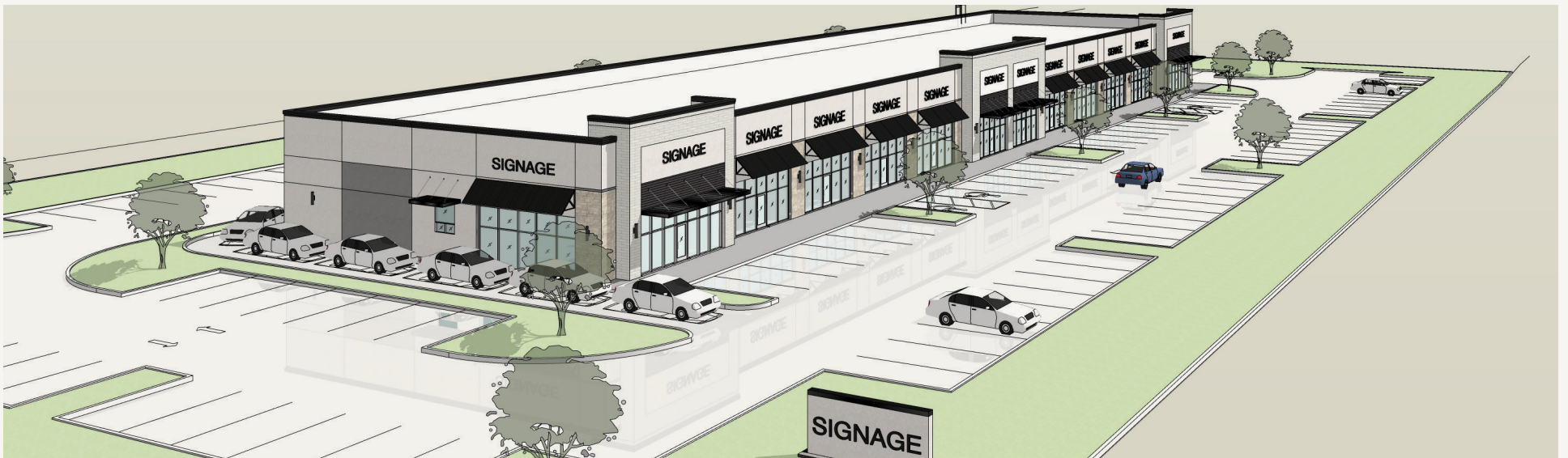
Drone

SWC Altamesa Blvd & Chisholm Trail Pkwy
Fort Worth, TX 76123



Renderings

SWC Altamesa Blvd & Chisholm Trail Pkwy
Fort Worth, TX 76123



SWC Altamesa
Blvd & Chisholm
Trail Pkwy
Fort Worth, TX

DEVELOPED BY:  **Hunington**

Amy Pjetrovic
Principal

apjetrovic@venturedfw.com

Natalia Singer
Senior Vice President

nsinger@venturedfw.com

Mia Ureña
Transaction Manager

murena@venturedfw.com

(214) 378-1212

www.VentureDFW.com

8235 Douglas Ave
Suite 720
Dallas, Texas 75225

VENTURE

*The information contained herein was obtained from sources deemed reliable; however, Venture Commercial Real Estate, LLC, makes no guarantees, warranties or representations as to the completeness or accuracy thereof. The presentation of this property is subject to errors; omissions; change of price, prior to sale or lease; or withdrawal without notice.

MIA UREÑA
@MIAUREÑA

